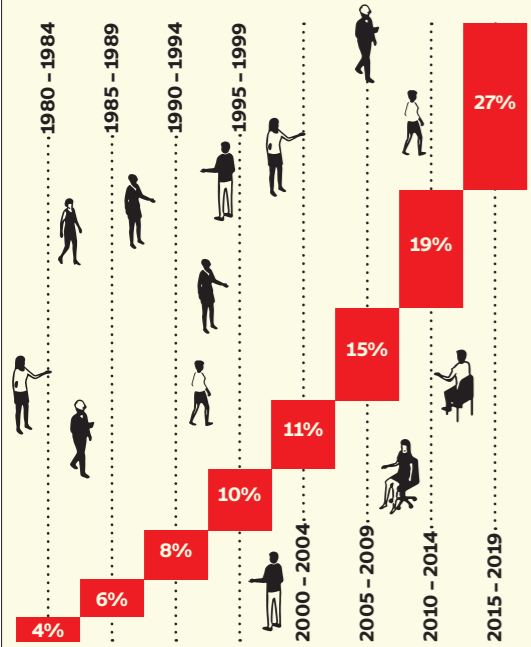


Alumni career paths

A January 2022 survey carried out among 29,630 alumni and alumnae who graduated between 1980 and 2019 showed just how much these talented individuals are contributing to research, innovation and the economy, both in Switzerland and abroad. The respondents (11.9%) are well-integrated into the job market and have pursued a variety of careers. They hold key positions and have salaries above the Swiss average. The number of female graduates in architecture, science and engineering has risen considerably, although gender inequality is still a concern.

A young, fast-growing network

Our network has grown considerably in recent decades. Half of these graduates obtained their most recent diploma after 2010, and more than half are under 41.

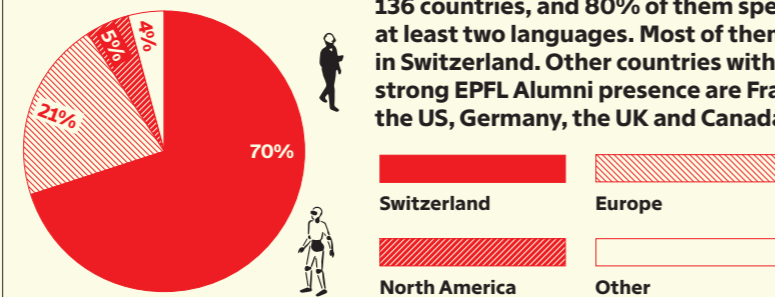


>72%
work in the private sector

95% of respondents are gainfully employed: 72% in the private sector, 23% in the public sector and 5% for non-profit organizations.

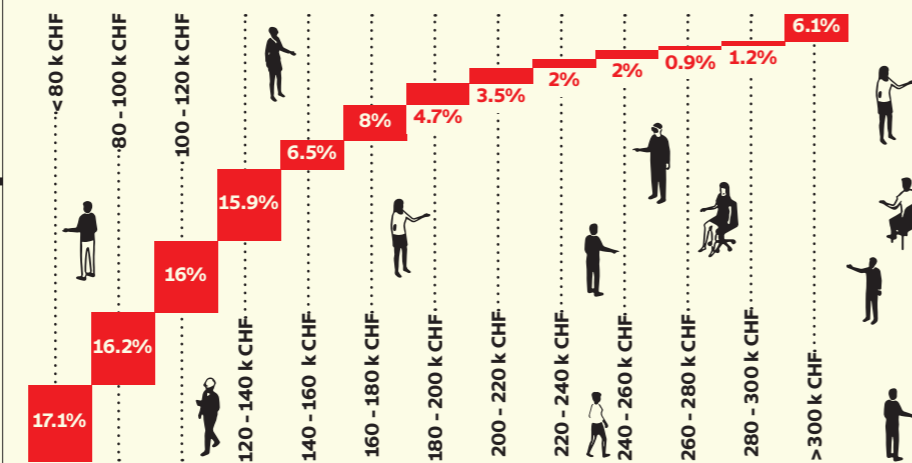
Over 70% work in Switzerland

Our graduates come from over 136 countries, and 80% of them speak at least two languages. Most of them work in Switzerland. Other countries with a strong EPFL Alumni presence are France, the US, Germany, the UK and Canada.



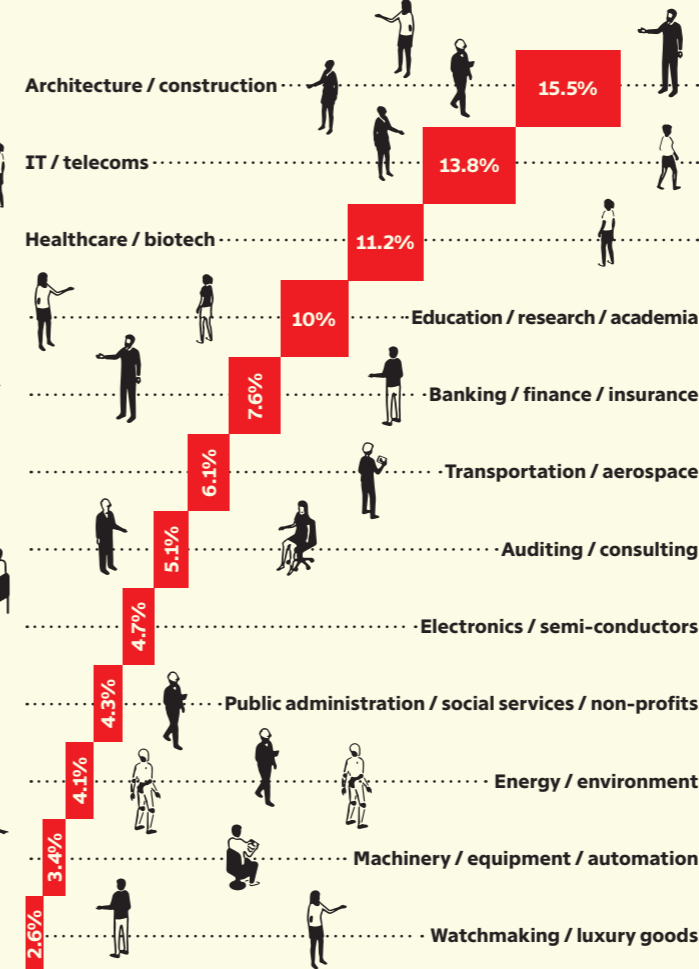
CHF 120-140k median annual salary

The median annual salary of survey respondents is CHF 120-140k. In Switzerland as a whole, the average is CHF 80k, and the average among university graduates is CHF 120k. The highest-paying jobs are in management, finance, luxury goods and law. Over half of respondents are in management positions (across all ages and years of career experience).



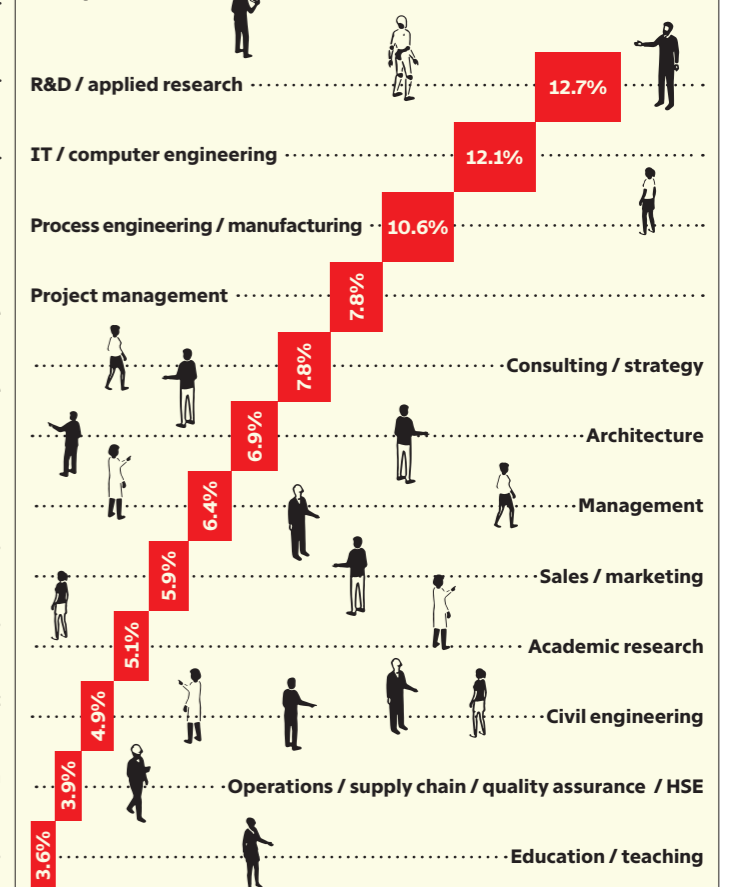
A broad range of industries

The respondents work in industries that reflect their training and Switzerland's economic landscape.



Positions linked to their majors

Over 45% of respondents hold jobs in R&D, IT or engineering, and nearly 20% are in management, sales & marketing or consulting. 86% state that their work is still closely related to their field of study at EPFL.



Clear gender inequality

21%
of EPFL graduates are women

The share of women in each graduating class rose from 8% in the 1980s to 27% in 2015. Together they make up 21% of our EPFL Alumni network, but with stark differences among the disciplines.

48%
of women with children work full-time

68% of female respondents work full-time, compared with 88% of male respondents. The average full-time rate for women in Switzerland is 41.5%. When it comes to female respondents with children, only 48% work full-time, while the figure is 84% for male respondents with children.

80-100k
CHF median annual salary

Female respondents earn 30% less than their male counterparts with the same degree. Just 11% of female respondents hold top management positions versus 28% of male respondents.

Learn more about the survey in our summary report, available at the following link or by scanning the QR code:



go.epfl.ch/alumni-career-survey



INFOGRAPHIC: EMPHASE SÀRL